

Tomorrow's health starts here.



Tomorrow's health starts here

We unite the finest medical experts with the newest technologies to uncover deep health insights.

Because this is how we best protect tomorrow's health.



Here, we are multi-disciplinary: consultants from a wide range of specialisms operate here, with access to leading-edge medical technologies.

And here, we are well-connected: under one roof, we can integrate different medical disciplines to be more responsive to your health needs.

Which means health assessments and diagnostics can be comprehensive, swift and, above all, tailored to you.

Advanced health assessments

Our range of health assessments and diagnostic procedures at UME Health are unique, just like you.

It means that we are able to tailor what we do around your individual needs. It means we can act upon the health insights we uncover, or take full advantage of different techniques to gain further insight.

It means a personalised experience for you, and an individualised response to your personal health status.



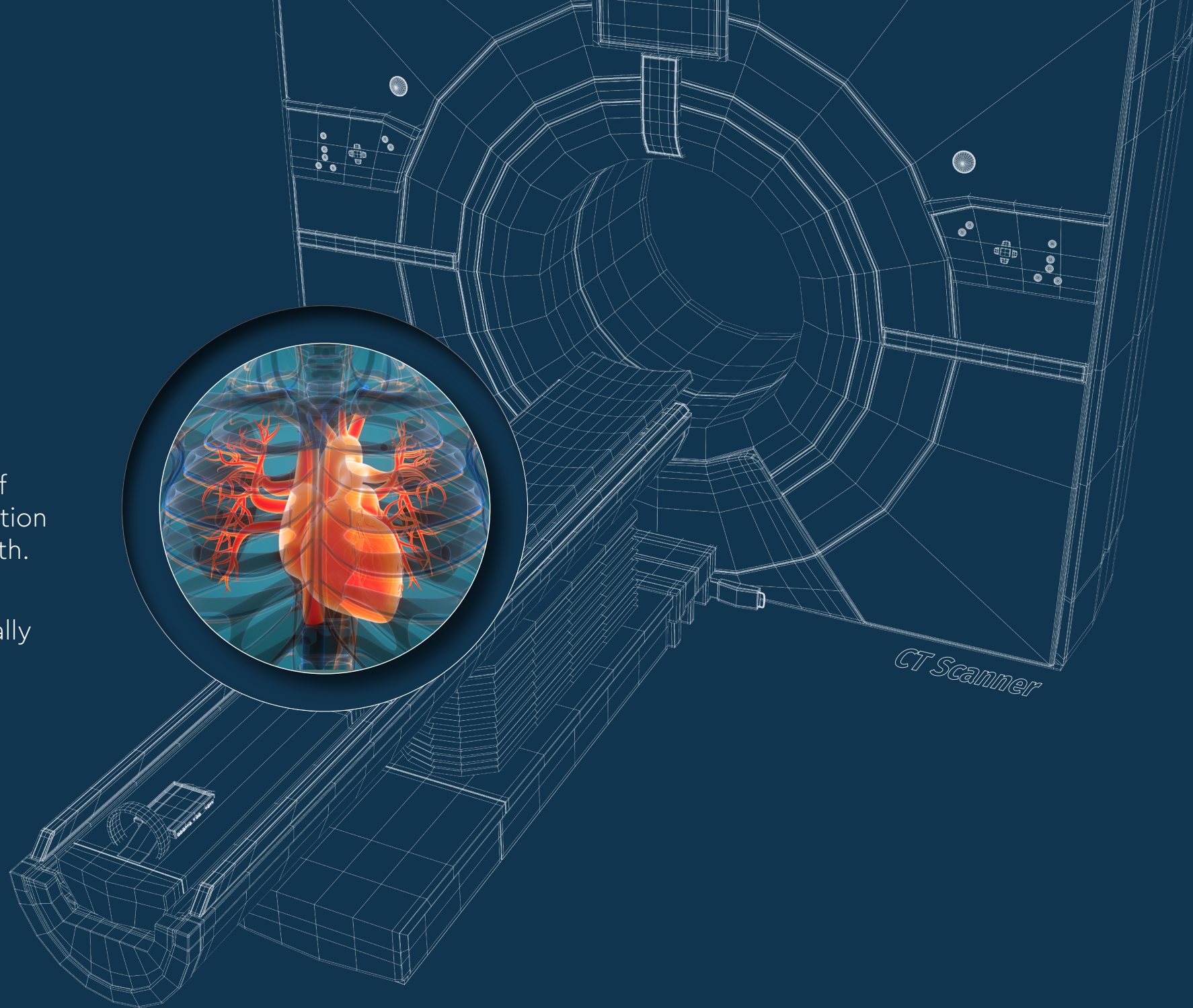
***Our services are always
built around you personally,
because it's your health
we're here to protect.***

Heart health

Your cardiovascular system is, quite literally, the beating heart of your wellbeing.

With the wide scope of expertise available here, we can assess your cardiovascular health in a number of different ways, and put that information into the context of your overall health.

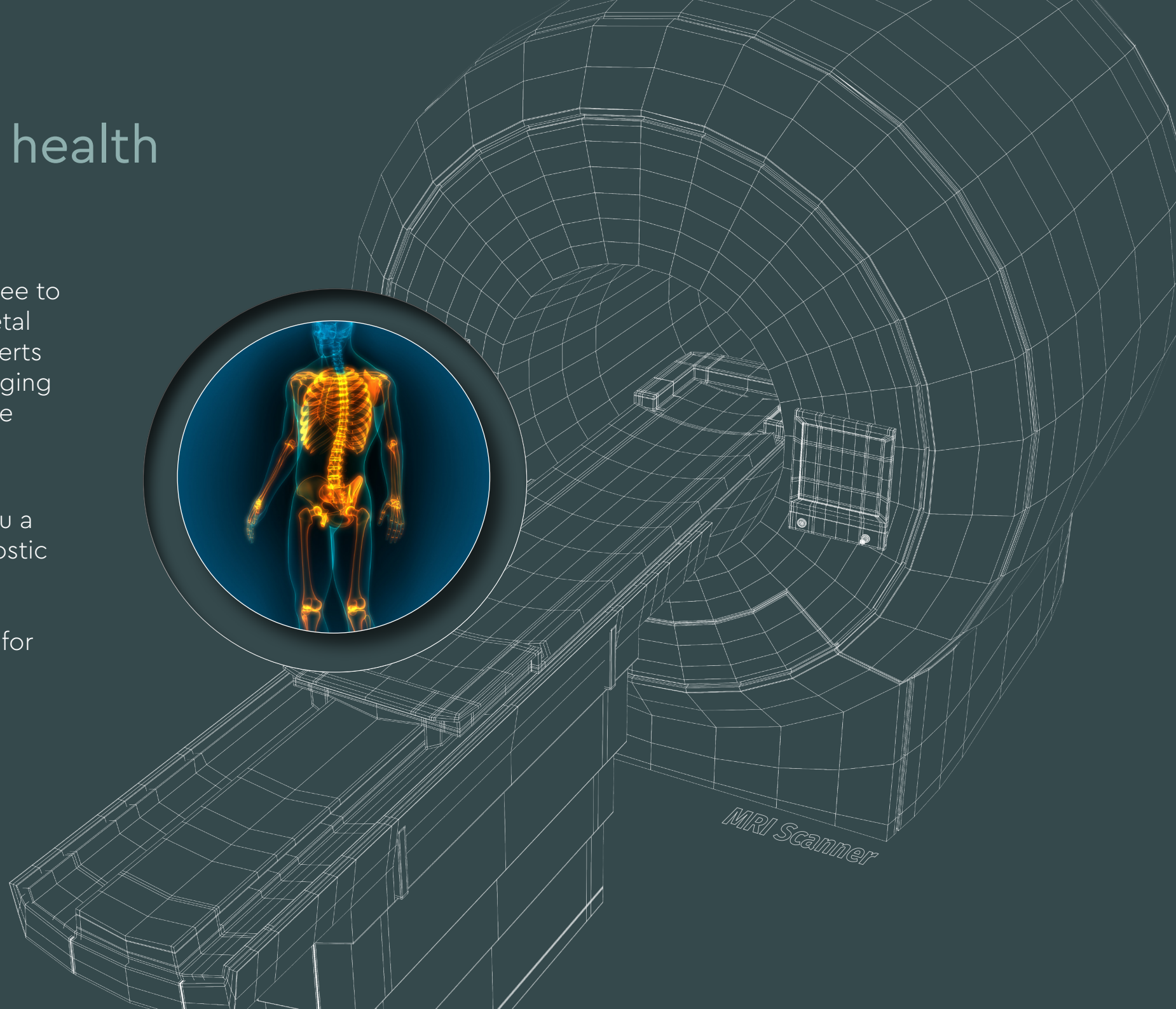
Protecting heart health as part of protecting overall health is what really keeps you ticking.



Musculoskeletal health

Life is lived better when we are free to move properly. The musculoskeletal specialists at UME Health are experts at treating, diagnosing and managing a range of conditions affecting the spine, muscles, bones, tendons, nerves and joints.

This means that they can offer you a range of procedures, from diagnostic to corrective and interventional procedures. To help keep you as active as possible tomorrow and for years to come.



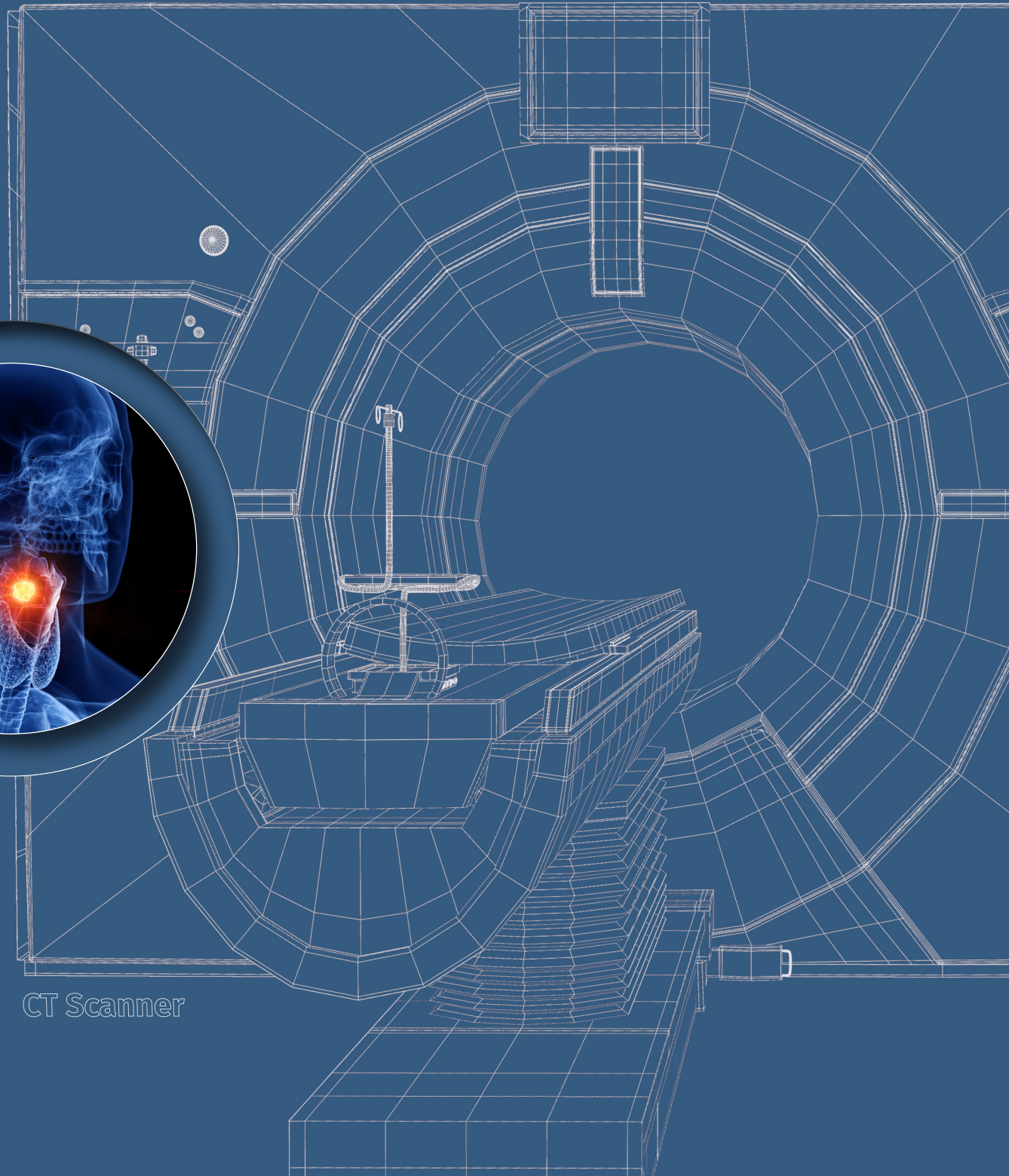
MRI Scanner

Head and neck health

More than just ear, nose and throat, our consultants can also help keep you sleeping, hearing and breathing well.

Voice and speech disorders, snoring issues and thyroid problems can all be managed by the team here, alongside the more day-to-day problems of asthma, allergies and infections.

You might say a head start for a healthy tomorrow starts here, today.



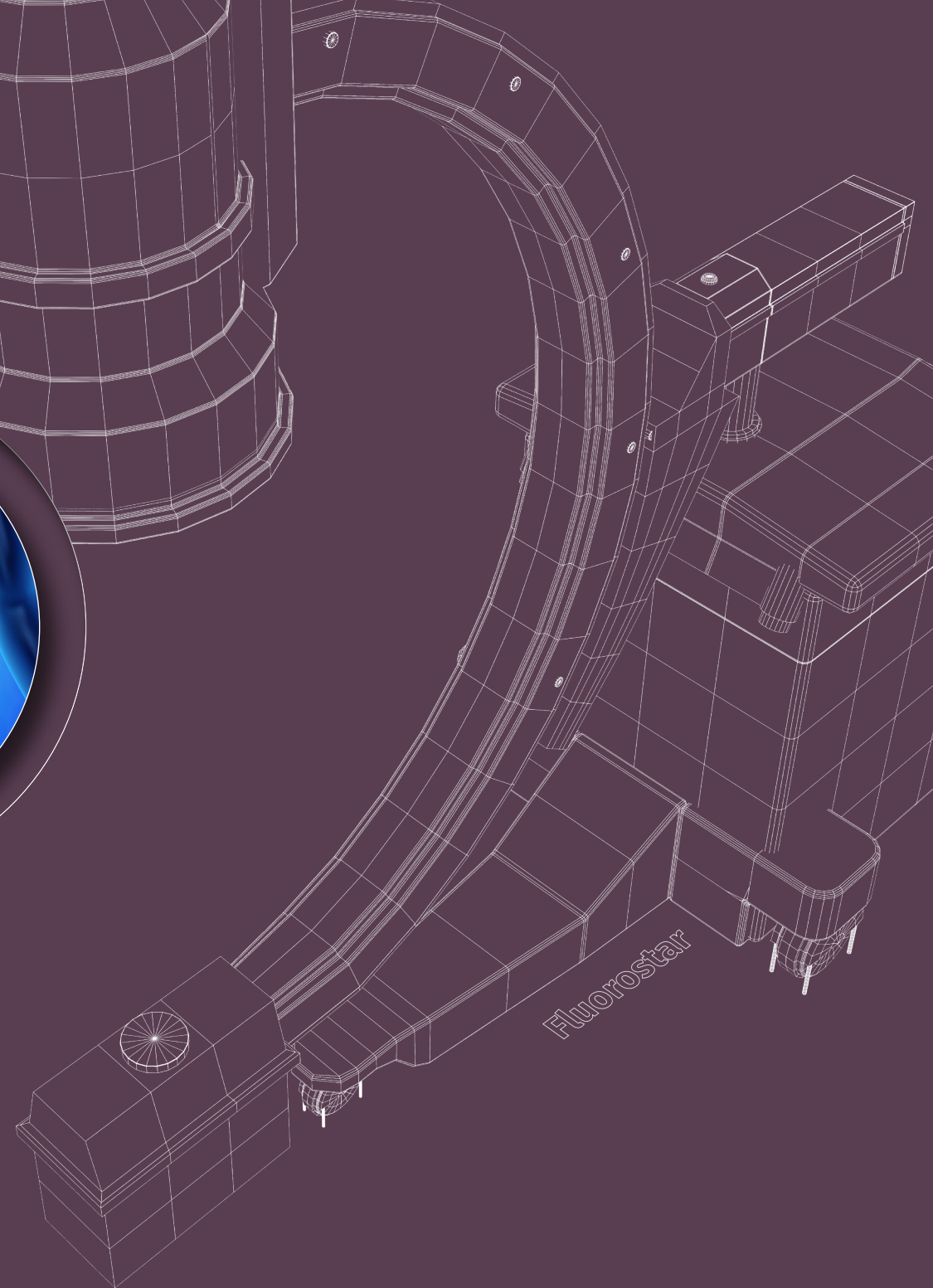
CT Scanner

Digestive health

The way we process food, and the organs, systems, hormones and proteins that regulate it are fundamental.

So, keeping these systems in good working order is essential if we are to keep ourselves in good working order.

With our specialists on hand, and our diagnostic systems in place, we're well-placed to make sure you stay healthy on the inside, as well as on the outside.

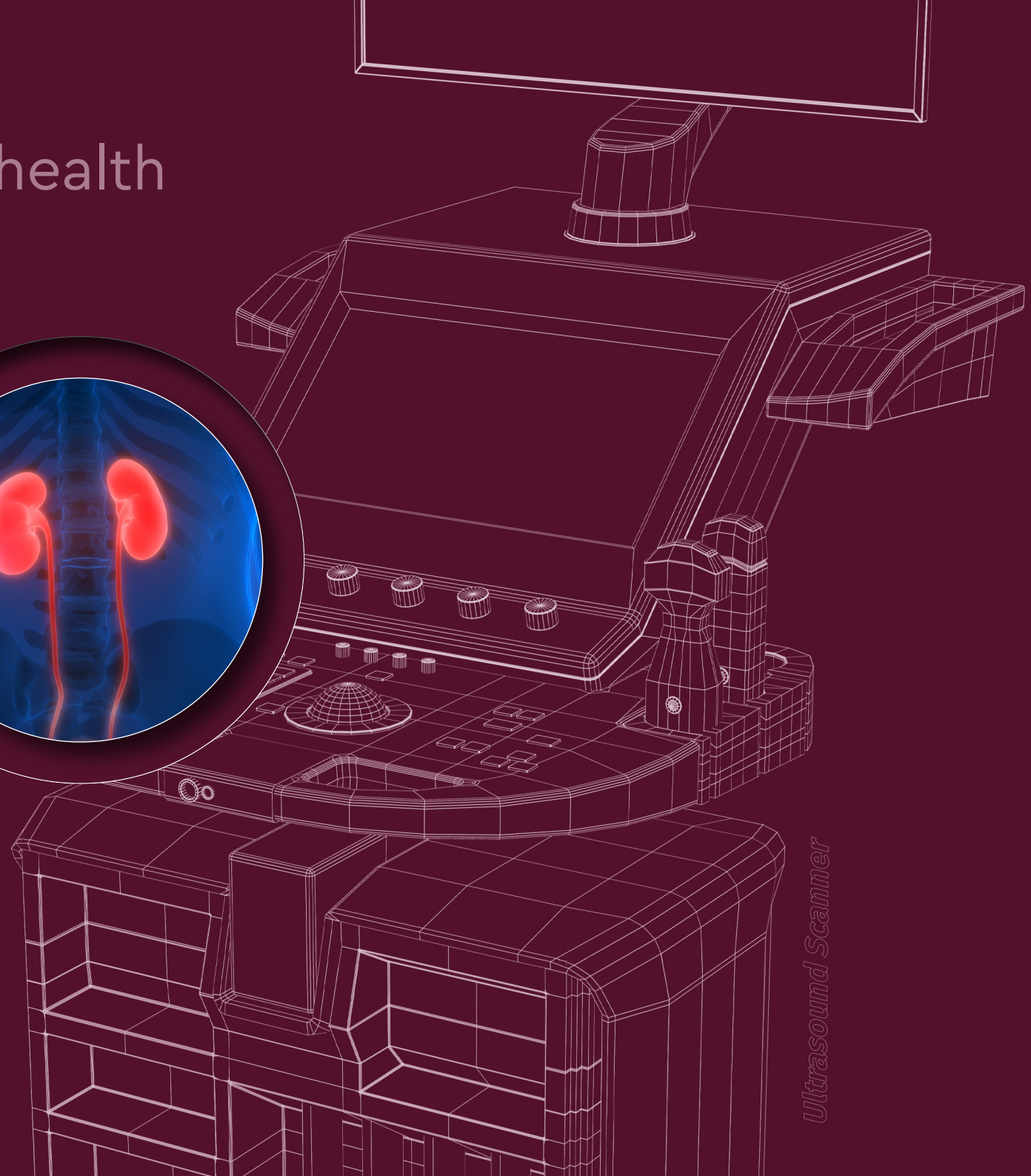
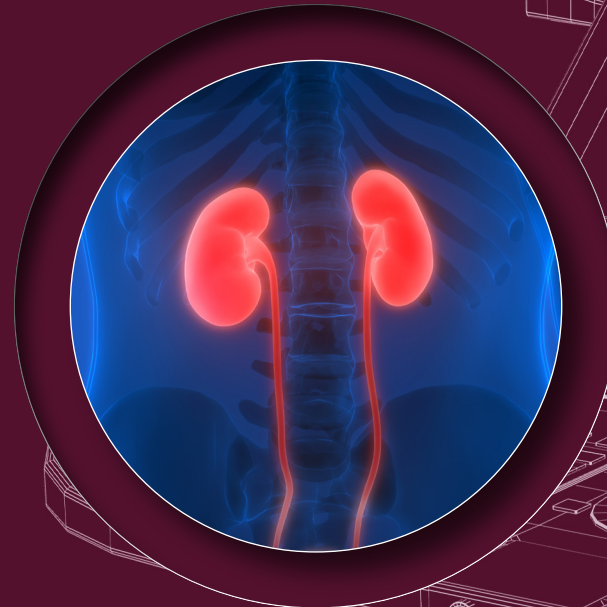


Urology and gynaecology health

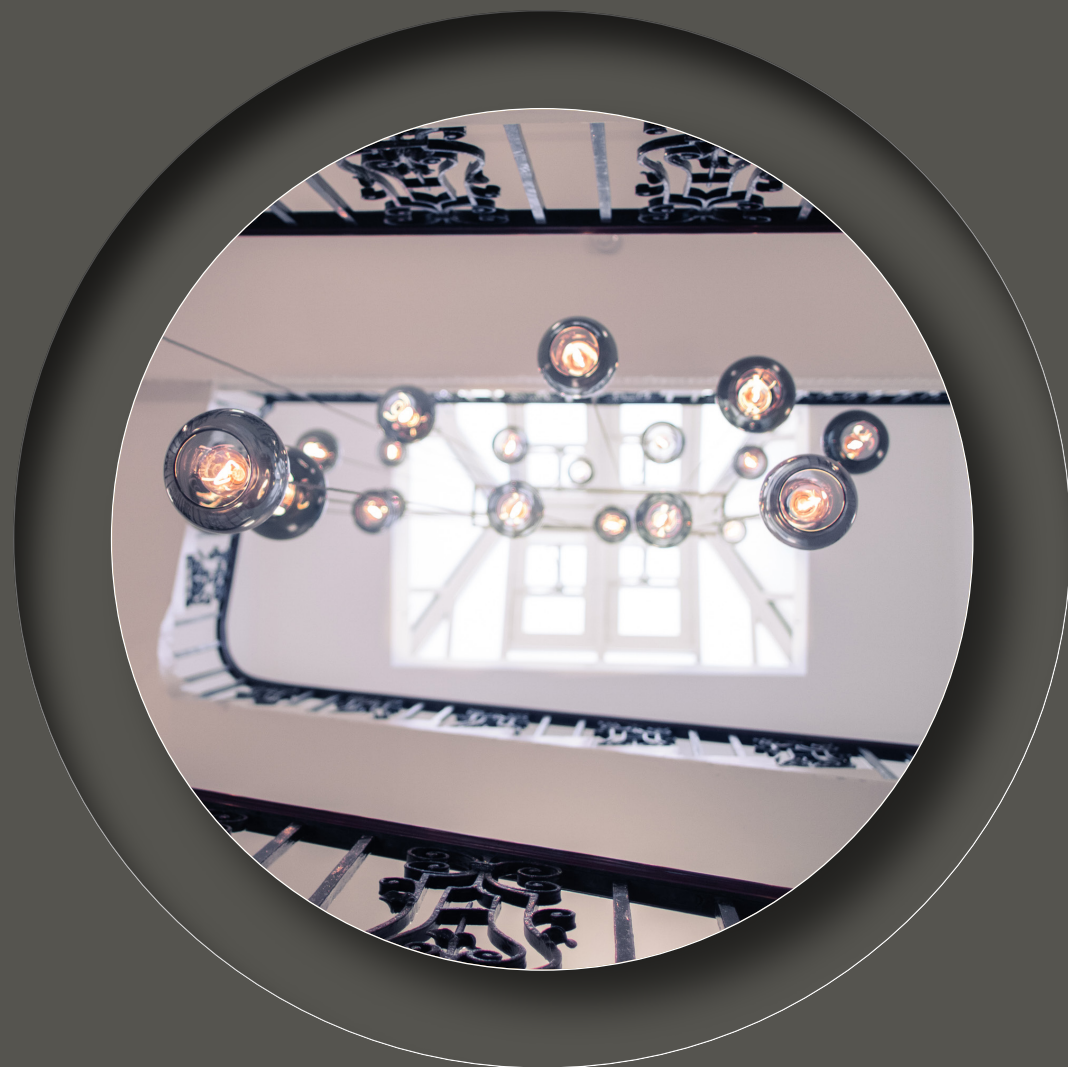
Some areas of healthcare are very intimate and personal. However, they should never be overlooked.

With experienced specialists and modern equipment, many diagnostic procedures, and treatments can be swiftly undertaken.

What's more, the range of diagnostic capabilities and medical disciplines here at UME Health mean that, if broader investigation is warranted, we are equipped and capable.

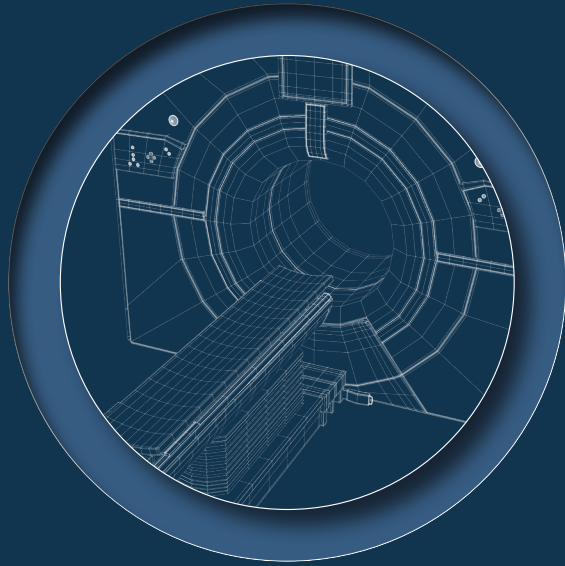


Ultrasound Scanner

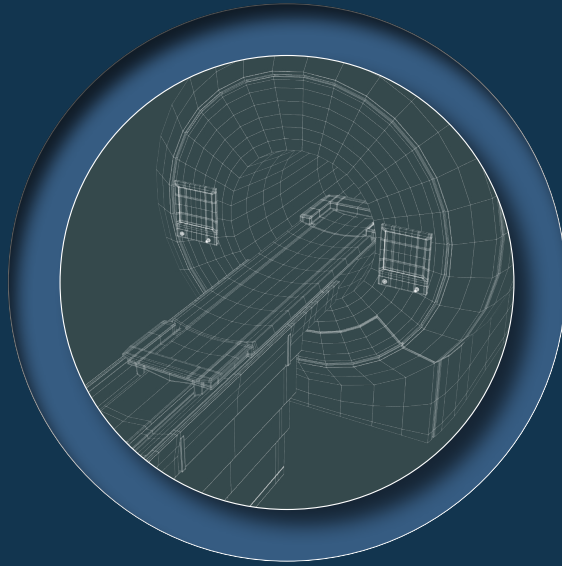


UME Health diagnostic suites

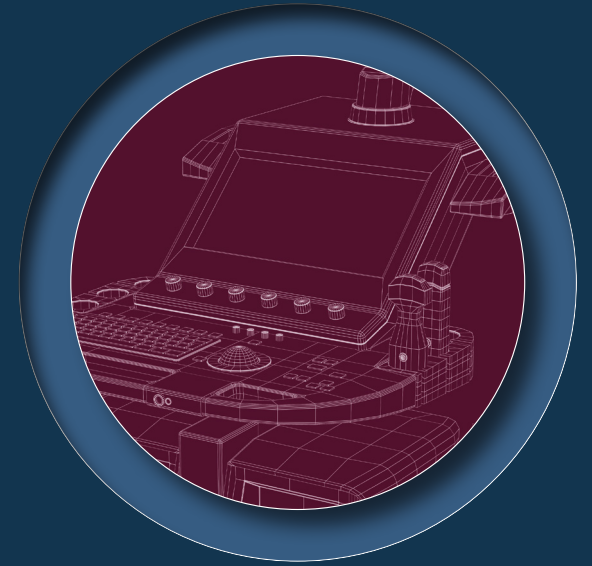
We offer a range of sophisticated diagnostic services and imaging including:



CT scanning, capable of reconstructing data at 512 slices and combining radiation dose reduction technologies with wider anatomic coverage.

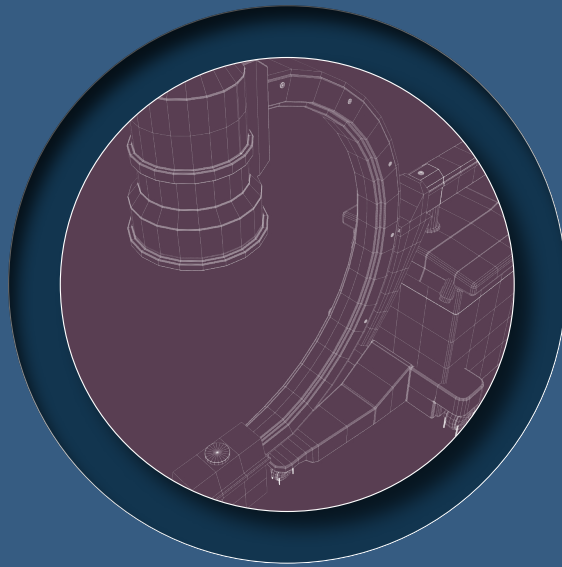


3T MRI scanning, with a serene video feed to whisk patients away from feeling claustrophobic or constrained.

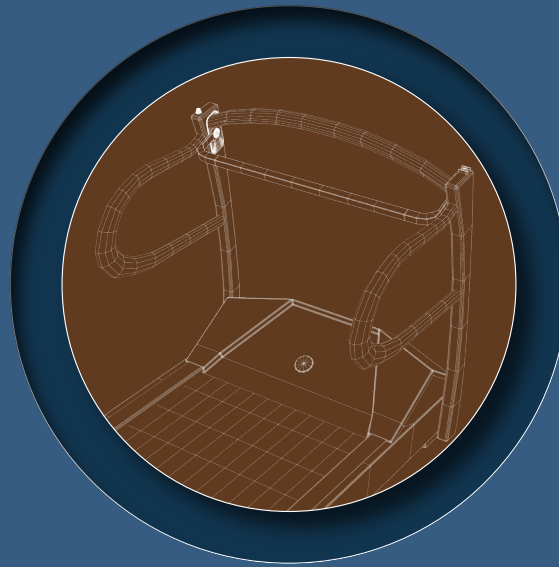


Ultrasound, using a wide variety of probes to investigate soft tissue, vascular or gynaecological issues.

UME Health diagnostic suites



Fluoroscopy and x-ray, allowing us to extract highly detailed images from bones and joints, as well as capture video in real-time to reveal dynamic physiological functioning.



Non-invasive cardiology suite, with treadmill, ECG, cardiac event monitor and ultrasound for carrying out echocardiograms, including stress echocardiograms.



AFT lab, including a tilt table test to evaluate the body's autonomic function.



UME Health

Tomorrow's health starts here



17 Harley Street, London, W1G 9QH